

SPS BOND 2023 PROJECTS REPORT

11.14.2023



ADMINISTRATION BUILDING

HVAC AND ROOFING IMPROVEMENTS

SPS, 505 Architects and Ascend Commercial Builders meet once a week to review construction progress and schedule.

- Boiler installation is complete and ready for commissioning.
- All new mechanical units are installed. Final connections and is near completion.
- Drywall and framing work is in progress.
- System control and adjustments are on going.
- Project Punch is scheduled for 11/9.

PROGRESS PHOTOS



Mechanical Units Progress



MIDDLE SCHOOL PLAYGROUND IMPROVEMENTS

SPS, 505 Architects and Ascend Commercial Builders meet once a week to review construction progress and schedule.

- Remaining shade structure sails installation is complete.
- Punch list and warranty items corrections are being coordinated around SPS usage schedule.

MIDDLE SCHOOL PROGRESS PHOTOS



SAIL SHADE STRUCTURE AT AMPHITHEATER



SAIL SHADE STRUCTURES AT OUTDOOR SEATING

HS PHASE 1

HS Phase 1 Design Development (DD) Phase is progressing on schedule.

- During the month of October and November 505 Architects continues to meet with HS KUG'S for the various HS spaces. These meetings review next level of details such as millwork, door types, specific finishes, lighting, power and data outlet locations, etc.
- 50% Progress DD KUG Review Meeting and the DRC Community Meeting was held on 10.23. Exterior and interior design, and site and floor plan were reviewed with no comments resulting in design changes.
- Design Development Phase will be completed with KUG, DRC and BOE DD HS Phase 1 Review meetings scheduled on 12.12 for review and approval to proceed with Construction Documentation Phase.
- Traffic Study scheduled for winter 2023 upon completion of the Husband Street Bridge.

HS PHASE 1



DD 50 PROGRESS KUG MEETING



HS PHASE 1

Pi-o-neer
noun
a person who is among the first to explore
verb
develop or be the first to use or apply

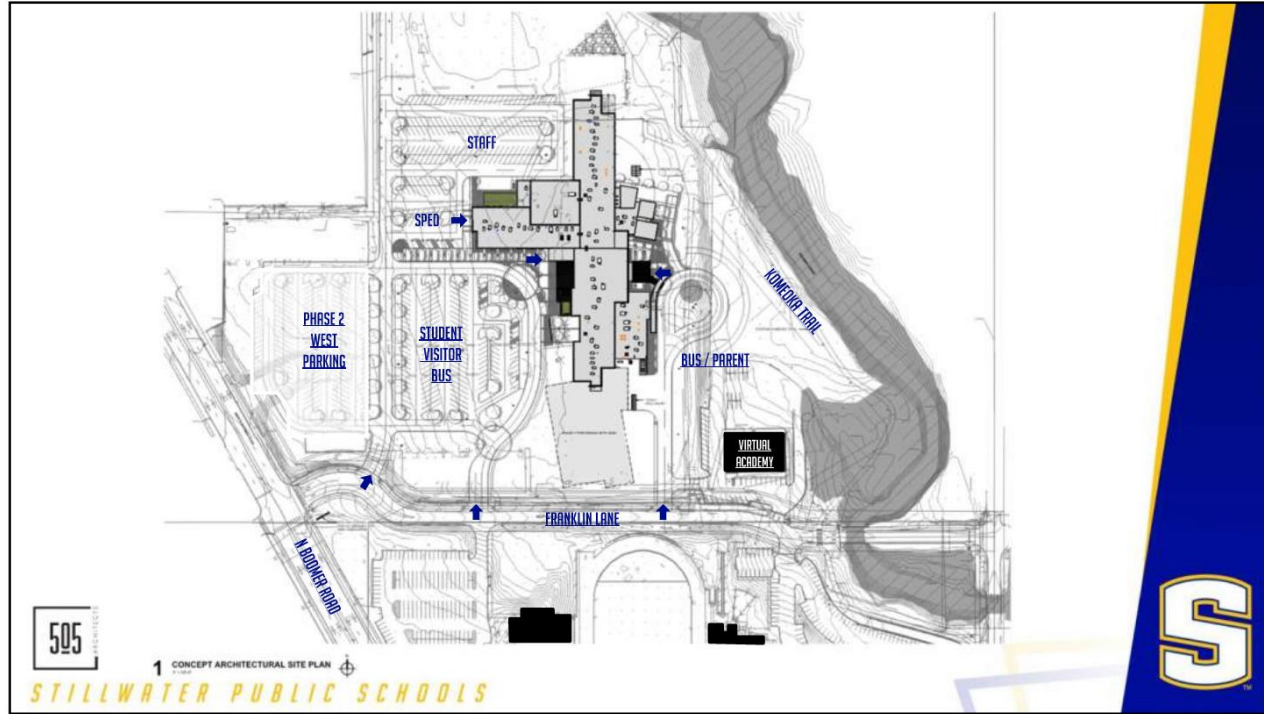
505
1 CONCEPT ARCHITECTURAL SITE PLAN
STILLWATER PUBLIC SCHOOLS

I AM A PIONEER

Pi-o-neer
noun
a person who is among the first to explore
verb
develop or be the first to use or apply

505
1 CONCEPT ARCHITECTURAL SITE PLAN
STILLWATER PUBLIC SCHOOLS

HS PHASE 1

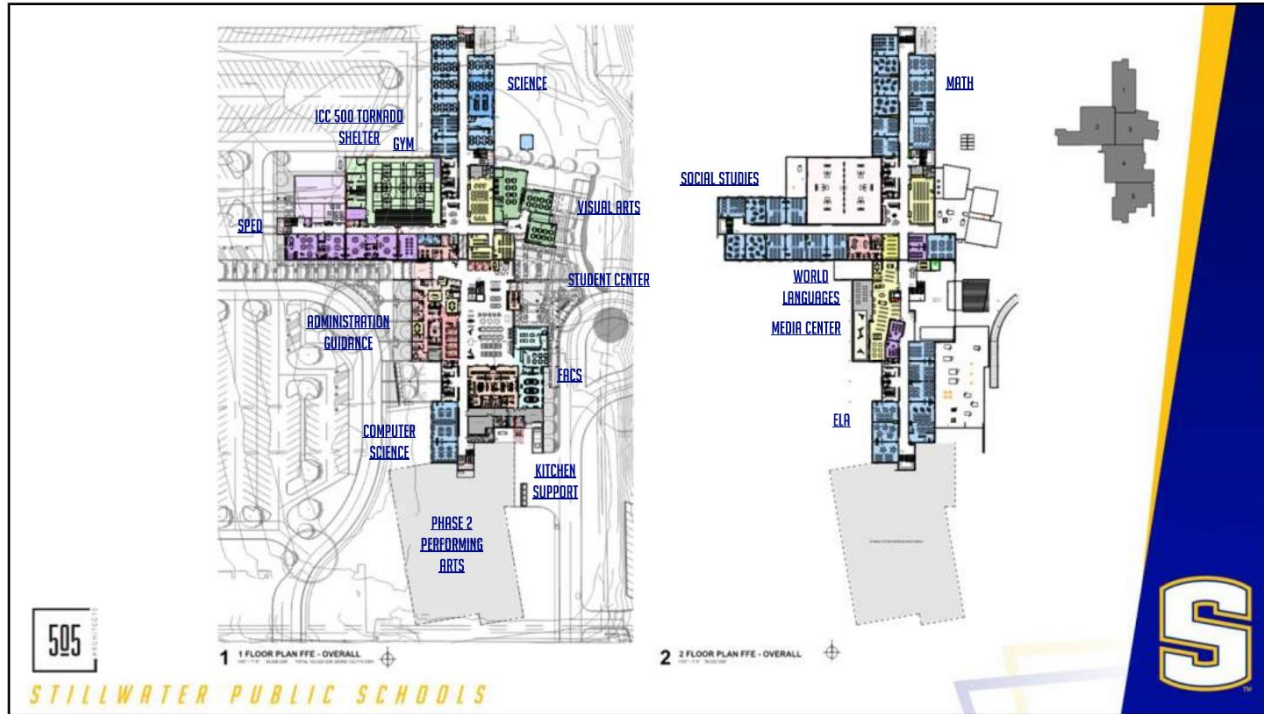


DESIGN DEVELOPMENT SITE PLAN – RELOCATED STAFF PARKING TO NW CORNER AND RECONFIGURED BUS / PARENT DROP OFF LOOP TO UPPER GRADE LEVEL

STILLWATER PUBLIC SCHOOLS



HS PHASE 1



DESIGN DEVELOPMENT FLOOR PLANS – INCORPORATED 2 ADDITIONAL FULL SIZE CLASSROOM SPACES, 7 OFFICE / TEACHER PLANNING SPACES, 1 ADDITIONAL STAFF RESTROOM

HS PHASE 1



FRONT WEST ENTRY



FRONT WEST ENTRY DROP OFF / PICKUP

HS PHASE 1



EAST ENTRY AND BUS DROP OFF LOOP



STAFF PARKING, GYM (ICC 500 TORNADO SHELTER) AND SPED COURTYARD

HS PHASE 1



SECURE LOBBY AND WEST ENTRY VESTIBULE



RECEPTION AND WAITING

HS PHASE 1



RECEPTION AND WAITING



ATTENDANCE OFFICE AND STUDENT CENTER

HS PHASE 1



ATTENDANCE OFFICE

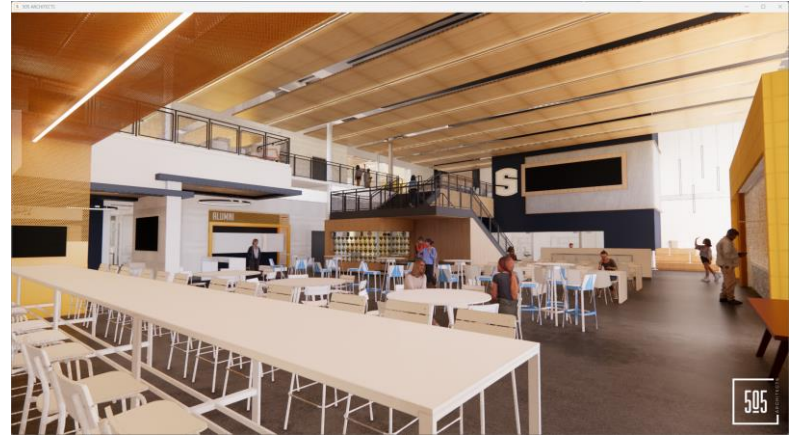


STUDENT CENTER - PIONEER PANEL AND ALUMNI PHOTO WALL

HS PHASE 1



STUDENT CENTER – PIONEER PANEL



STUDENT CENTER – MEDIA WALL

HS PHASE 1



STUDENT CENTER – PIONEER PERCH



STUDENT CENTER – VIEW LOOKING EAST TO EXTERIOR COURTYARD

HS PHASE 1



STUDENT CENTER – MEDIA CENTER ENTRY



MEDIA CENTER – MAKER SPACE AND STACK AREA

HS PHASE 1

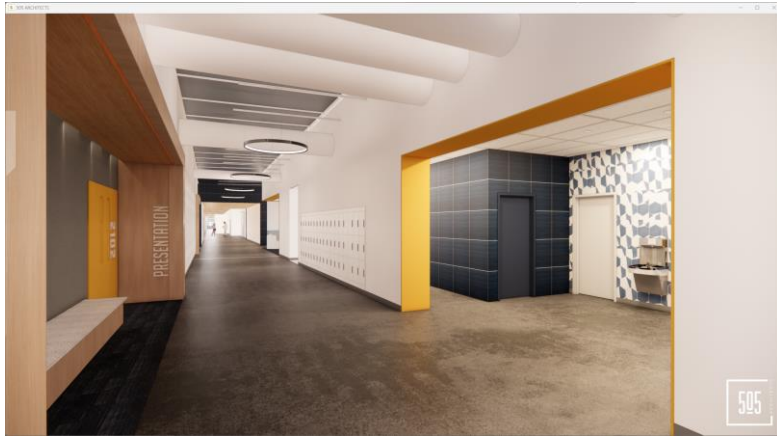


MEDIA CENTER – CIRCULATION DESK AND COLLABORATION SPACES

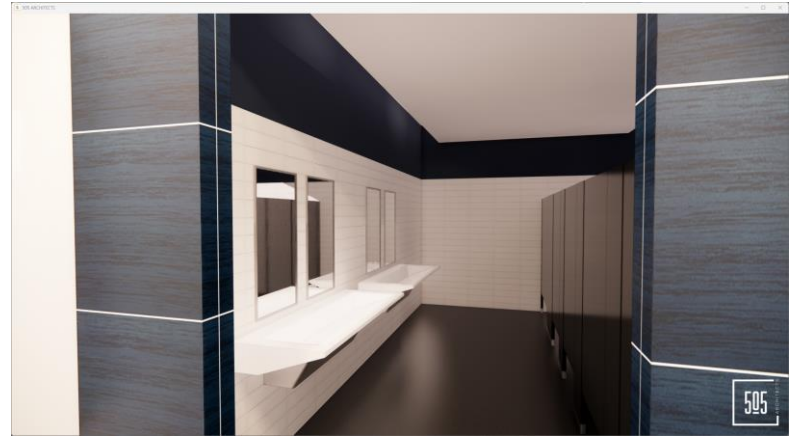


MEDIA CENTER – COMMUNITY COLLABORATION SPACE

HS PHASE 1



STUDENT RESTROOM ENTRY



TYPICAL RESTROOM

HS PHASE 1



CORE COMMUNITY HALLWAY ENTRY

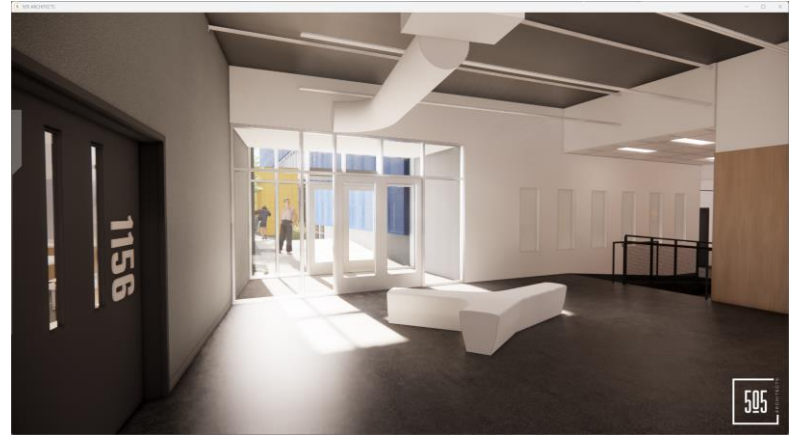


TYPICAL CLASSROOM ENTRY AND STUDENT LOCKERS

HS PHASE 1



VISUAL ARTS COMMUNITY ENTRY HALLWAY



VISUAL ARTS COMMUNITY LOBBY

SPS OES IMPROVEMENTS

505 Architects issued to SPS the OES Feasibility Report which included the proposed future utilization of the SPS OES facility to incorporate both SPS Technology and SPS Transportation Departments. A multiphase implementation is outlined within the OES Feasibility Report.

- Phase 1 is an interior renovation for the relocation of the SPS Technology Department from Cimarron Plaza to the OES Building 1 and relocation of SPS Child Nutrition Department to OES Building 2.
- 505 Architects Service Order 11 for Phase 1 Design and Documentation services is on the BOE November Agenda for consideration.
- Target date is for completion of Phase 1 is October 2024 to allow SPS Technology Department to vacate their Cimarron Plaza location at that time.

DEFERRED MAINTENANCE PROJECTS

Richmond Elementary Roof Improvements and Mechanical Equipment Improvements

- Design Phase has begun with field verification trip completed by 505 Architects on October 27th. Bid Documents will be issued in late January to allow for construction to begin Summer 2024.

JRHS Roof Improvements and Mechanical Equipment Improvements

- Design Phase has begun with field verification trip completed by 505 Architects on October 27th. Bid Documents will be issued in last January to allow for construction to begin Summer 2024.



STILLWATER PUBLIC SCHOOLS

